

# GAME ROOM

PLAN / SECTION / ELEVATION  
MATERIAL CALCULATION

## VIDEO GAMES:

	Artist	Title	Year
1	Iwatani Toru	Pac-Man	1980
2	Shigeru Miyamoto	Super Mario World	1990
3	Shigeru Miyamoto	The Legend of Zelda	2002

## EQUIPMENT:

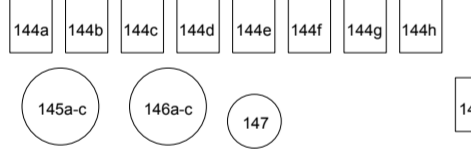
Image	Item	Nos.
	Sony monitors PVM-2030 20" screen HWD 15.75"x20.25"x17.25"	4
	Nintendo Super Famicom SHVC-001 HWD 72x200x242mm	2
	Pacman Table HWD 76"94"69mm	1
	Extension cable L=1-2m (monitor-player) Reel type	2

## FURNITURE:

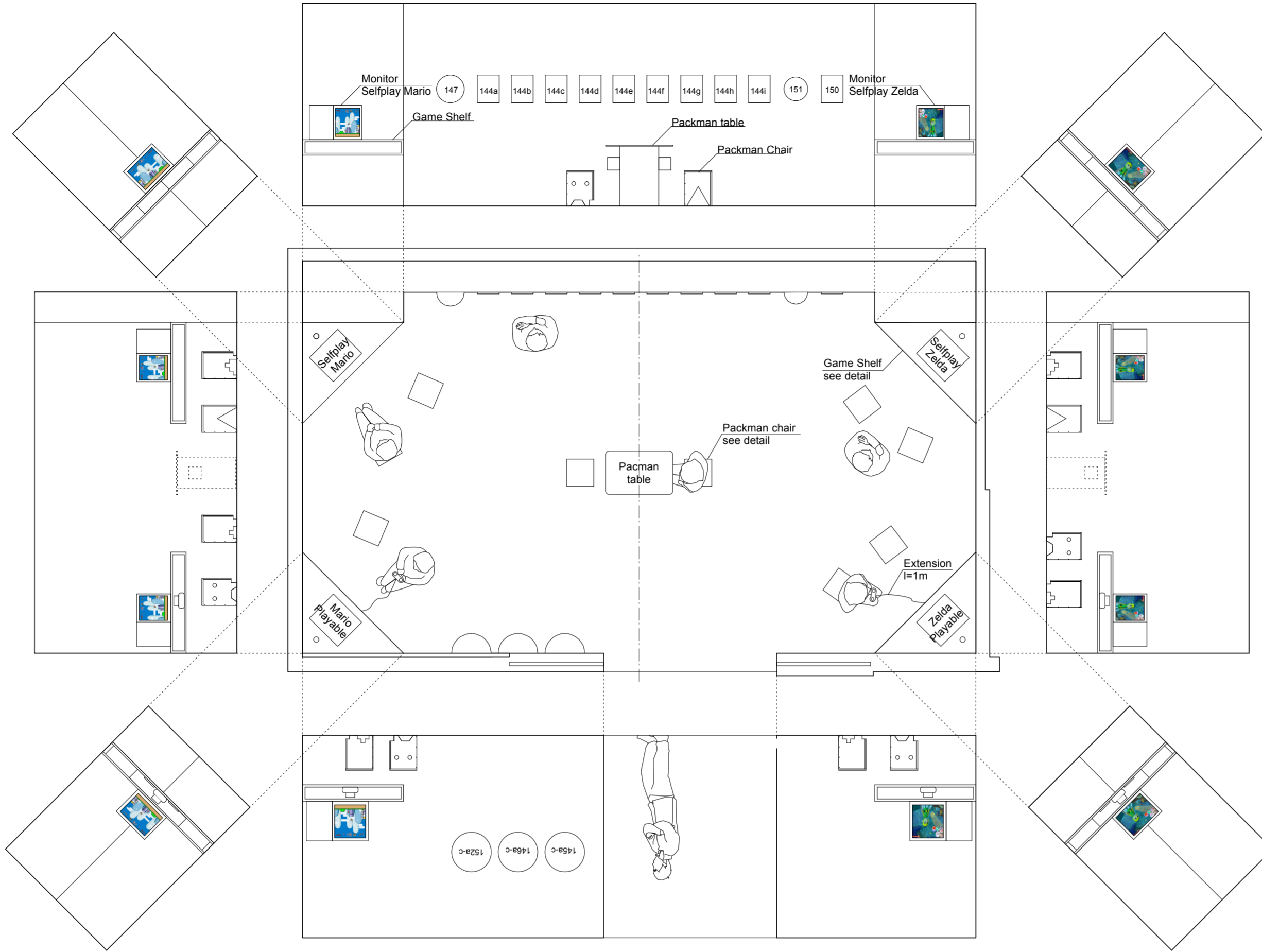
Image	Item	Nos.
	Game Shelf : type A 1300*1300*1838*198mm with 3 wiring holes	2
	Game Shelf : type B 1300*1300*1838*198mm with 2 wiring holes	2
	Chair A 350*350*450mm	3
	Chair B 350*350*450mm	2
	Chair C 350*350*450mm	2
	Chair D 350*350*450mm	3

## VIDEOGAME ROOM ARTWORK

MIYAMOTO SHIGERU MARIO  
FRAME 11"x14" 9  
DOME 20"dx7"h 2  
DOME 14"dx7"h 1

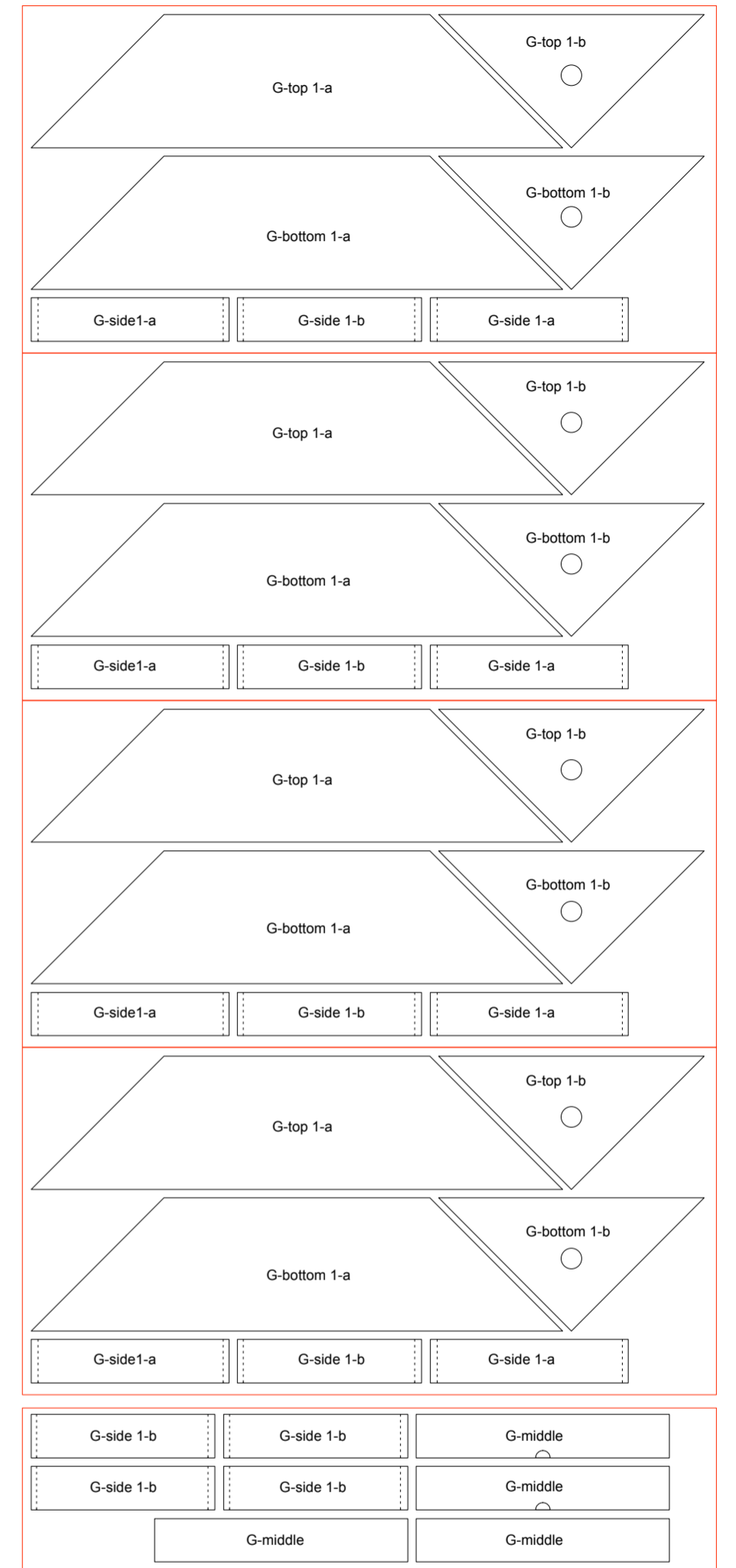


MIYAMOTO SHIGERU ZELDA  
FRAME 11"x14" 1  
DOME 12"dx6"h 1  
DOME 20"dx7"h 1

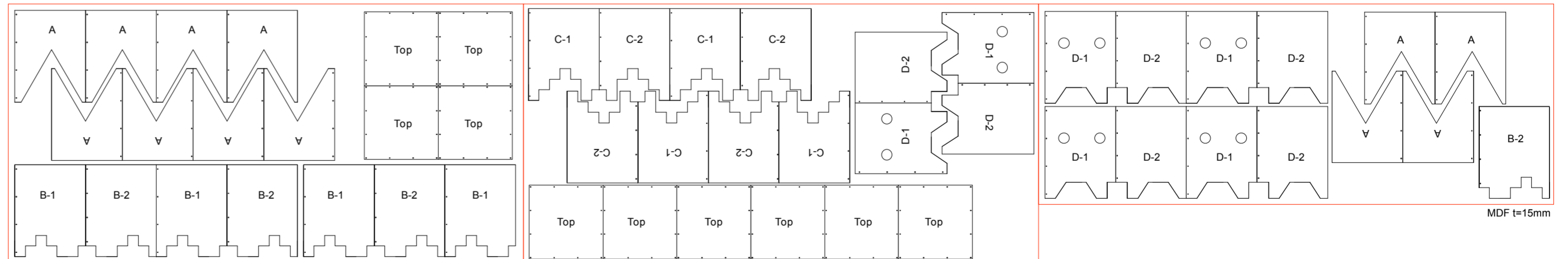


PLAN and ELEVATIONS scale=1/50

## MATERIAL CALCULATION Scale=1/20



MDF t=24mm



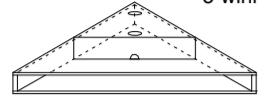
MDF t=15mm

① MDF t=24mm : 12.87sqm  
② MDF t=15mm : 8.27sqm

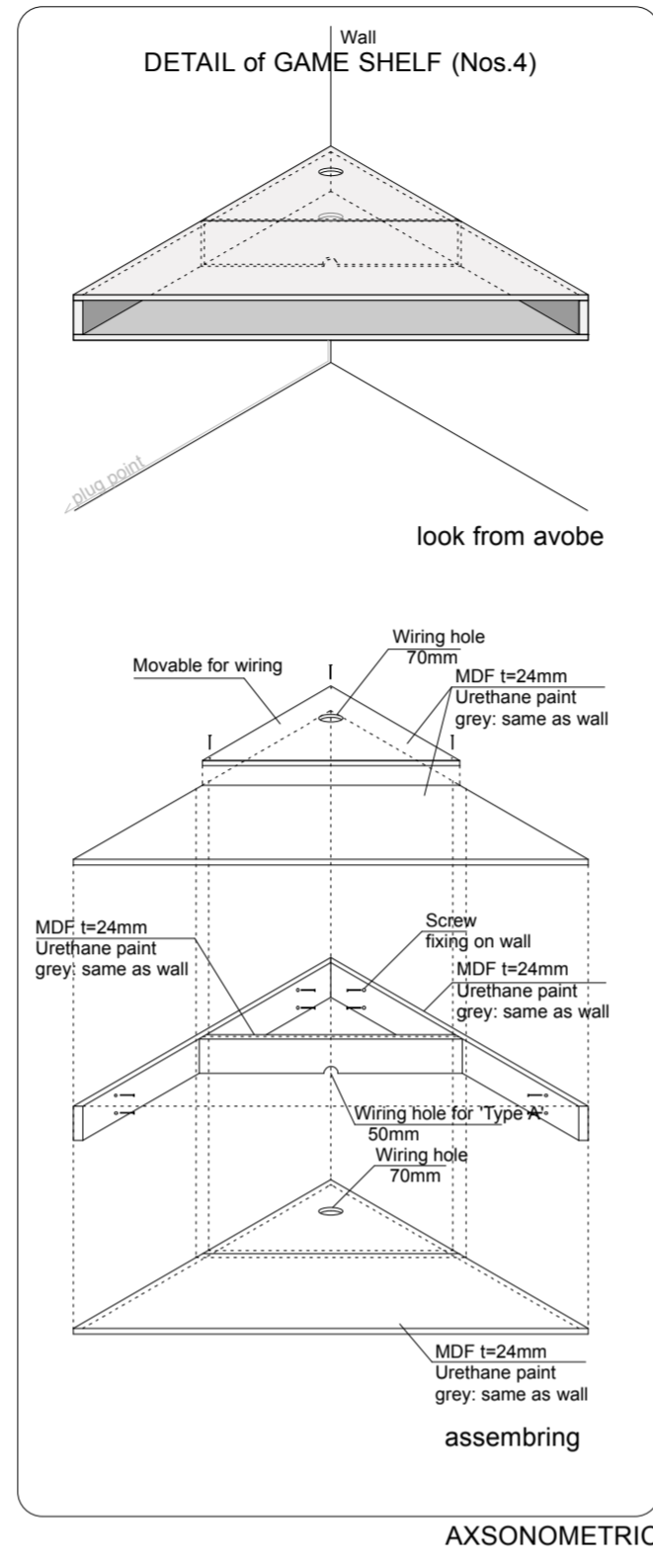
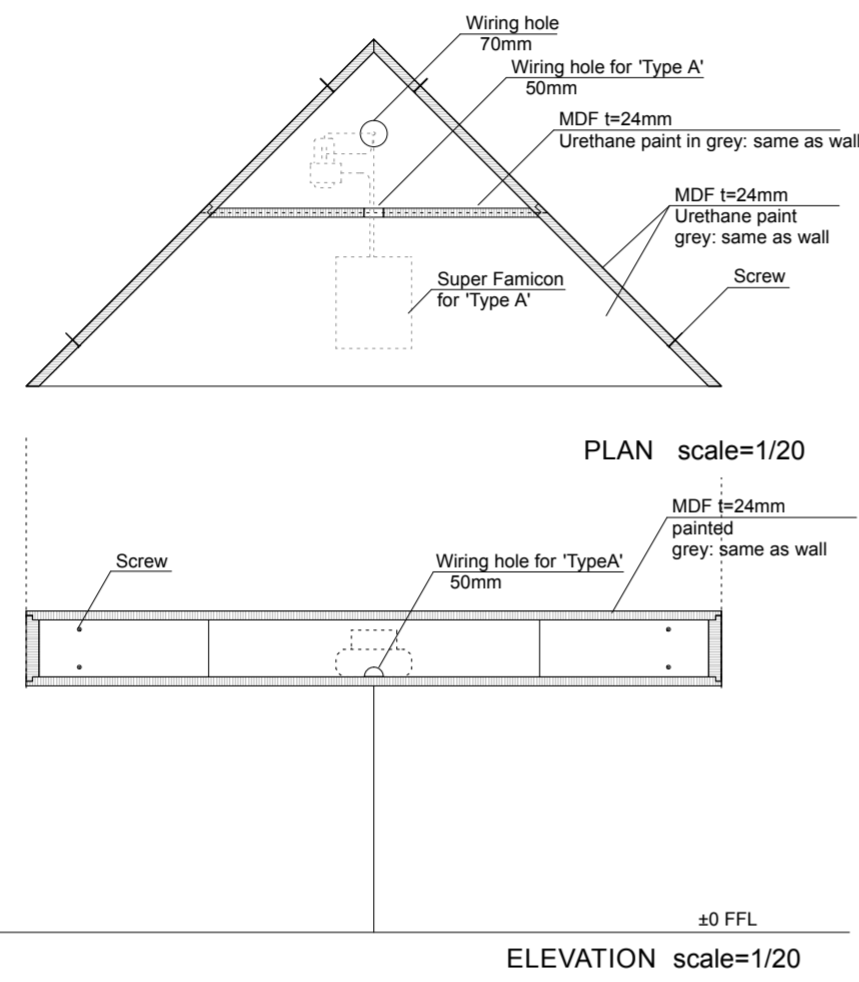
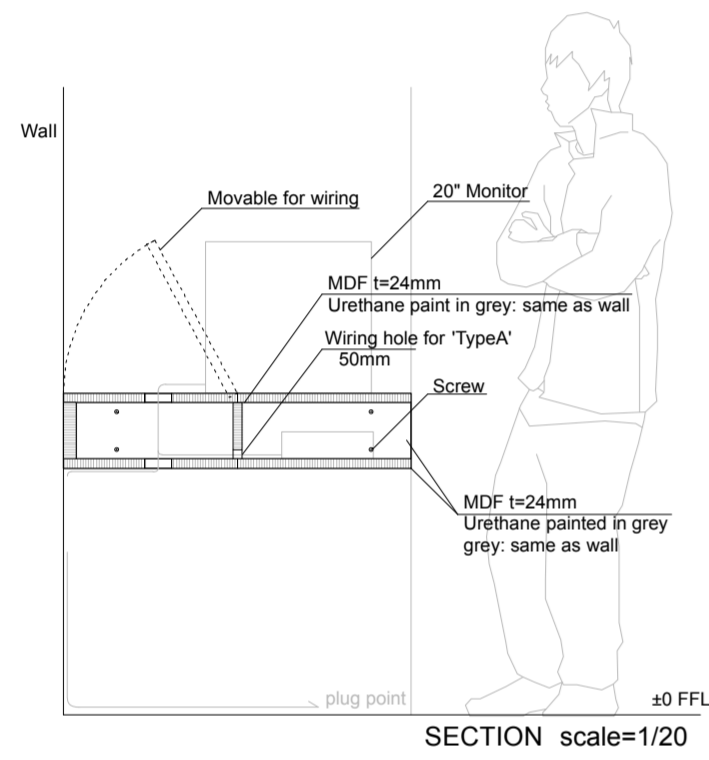
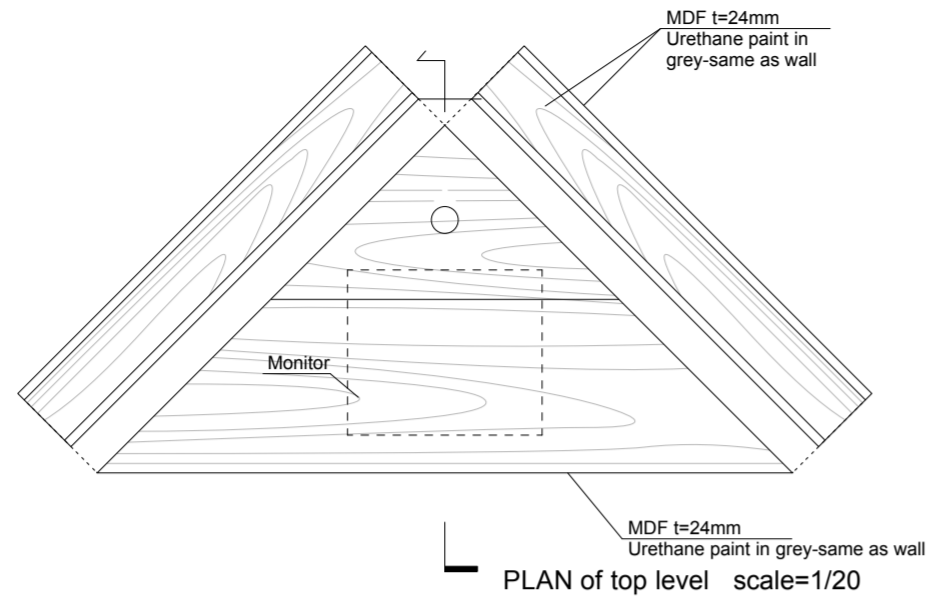
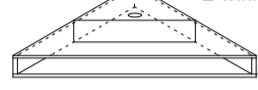
# GAME ROOM

## DETAIL of GAME SHELF (Nos.4)

'Type A' (Playable) : Nos.2  
shelf for playable monitor  
3 wiring holes



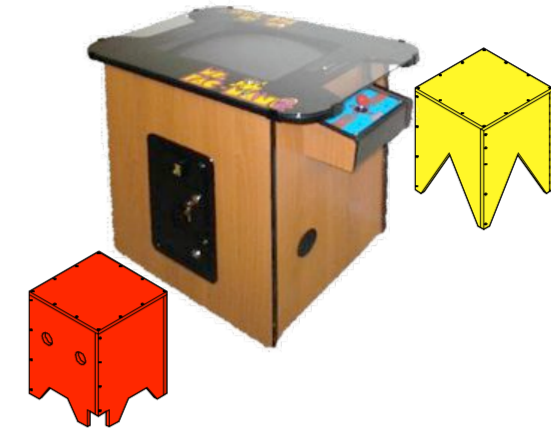
'Type B' (Playable) : Nos.2  
shelf for self-playing monitor  
2 wiring holes



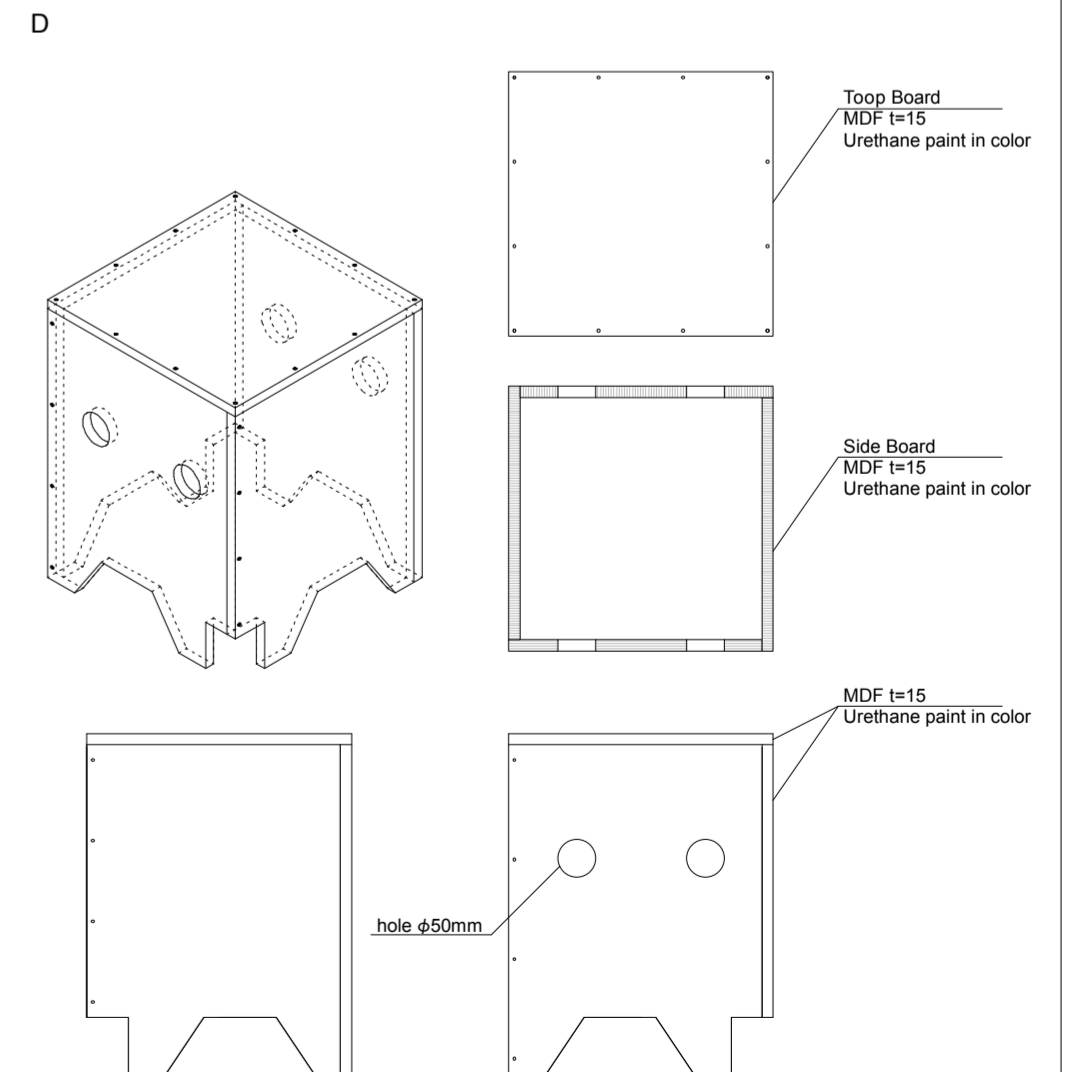
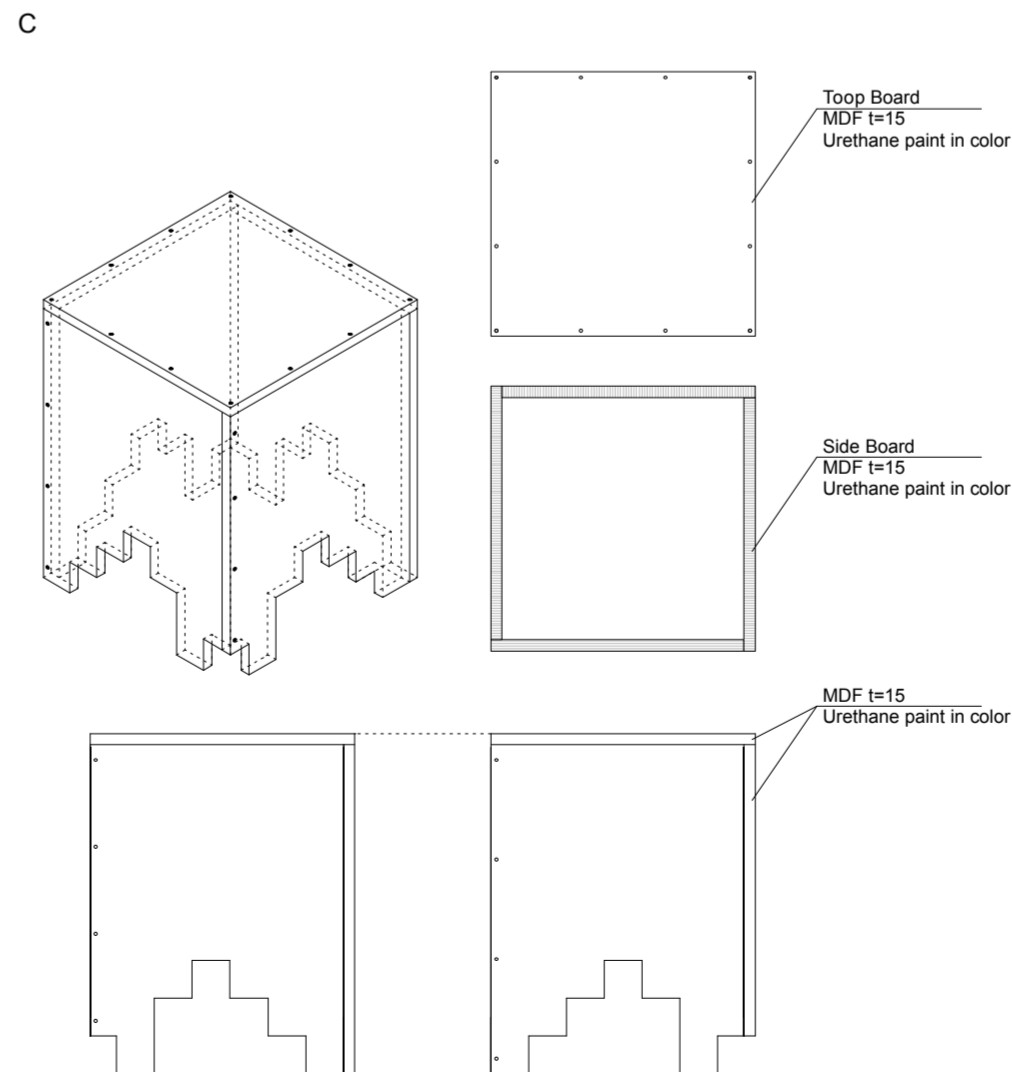
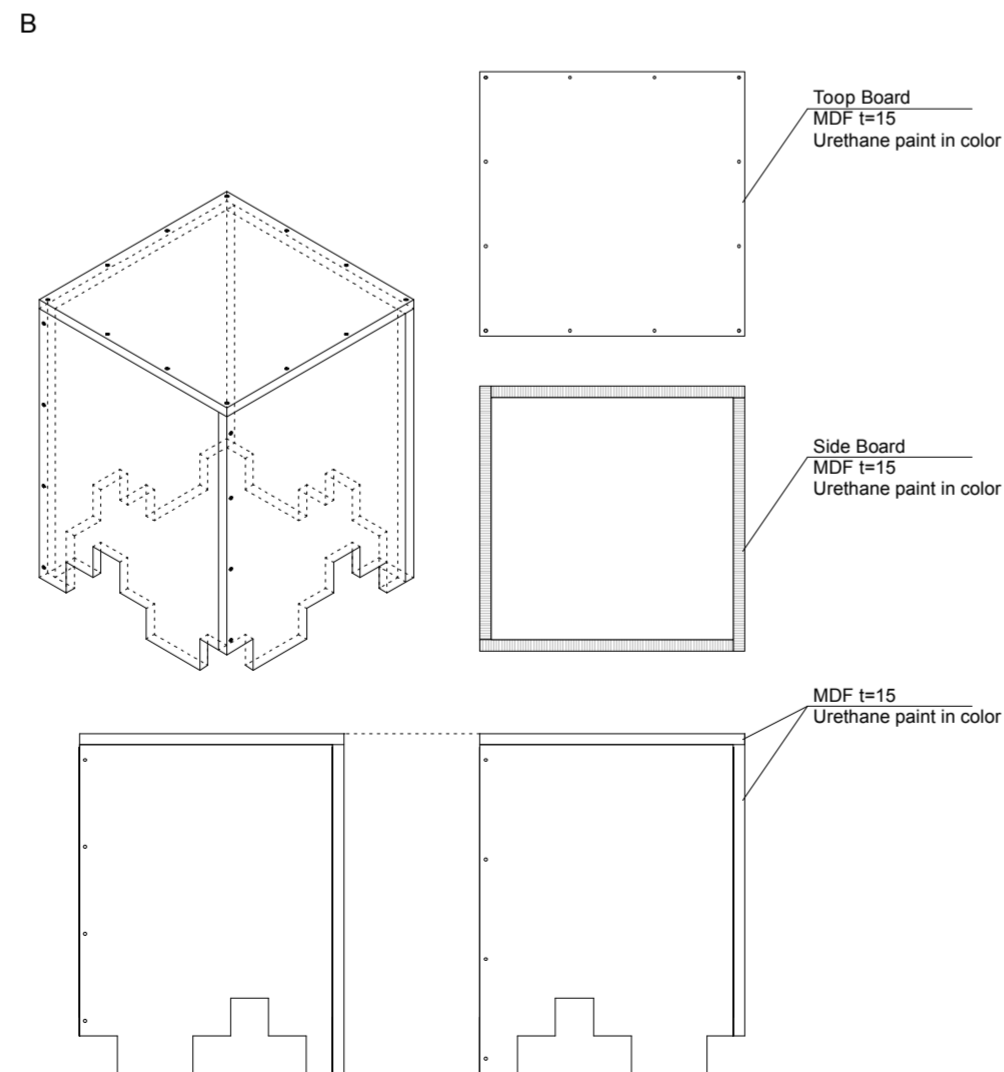
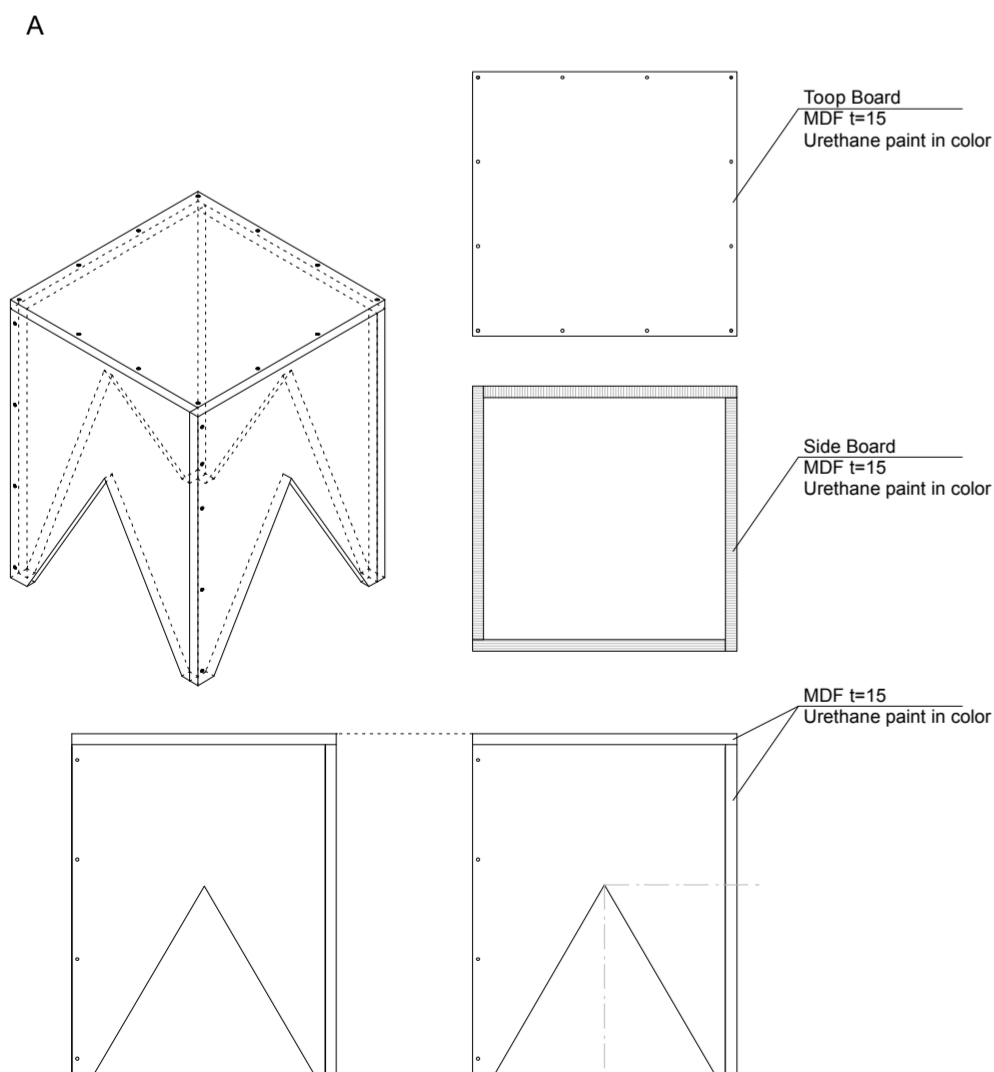
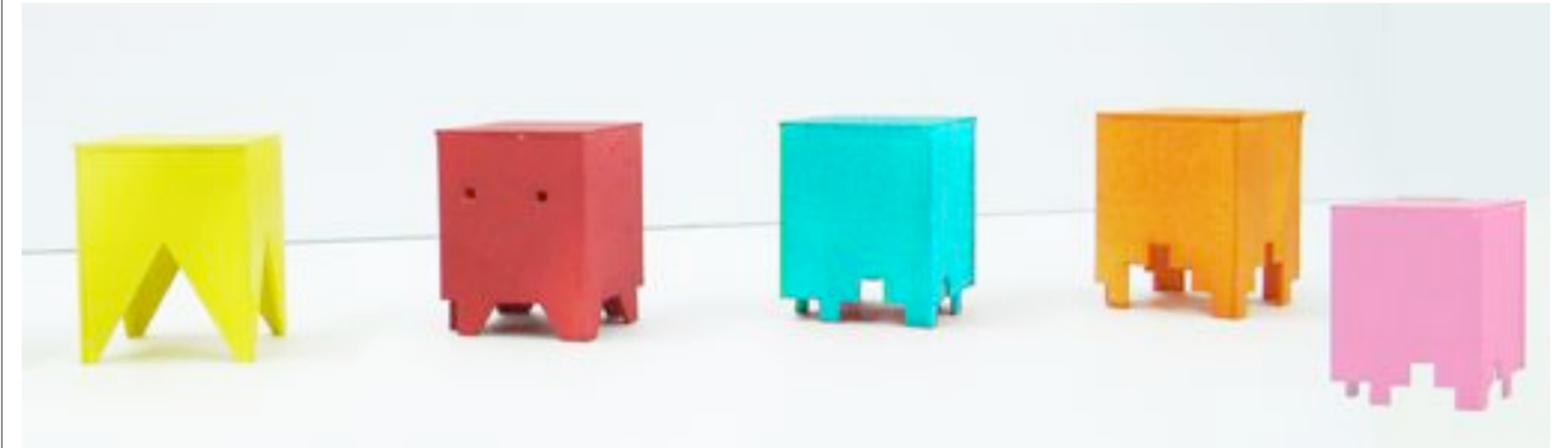
## DETAIL of PACKMAN CHAIR (Nos.10)

Type	Specifications	Nos.
A	WDH 350×350×450mm MDF Urethane paint Yellow*	4
B	WDH 350×350×450mm MDF Urethane paint Blue, Pink	3
C	WDH 350×350×450mm MDF Urethane paint Yellow, Red	3
D	WDH 350×350×450mm MDF Urethane paint Red, Blue, Pink	5

Colors by RGB  
Yellow : 255, 252, 0  
Red : 255, 39, 0  
Orange : 255, 204, 0  
Pink : 255, 160, 205  
Blue : 0, 253, 253



Packman motif

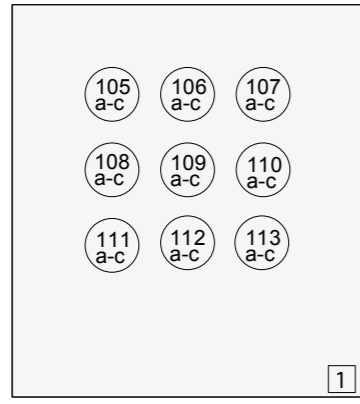


PLAN/ ELEVATION scale=1/10

# ANIME GARDEN

## ARTIST:

Artist	Title	Year
1 Ichiro Itano	<i>Super Dimension Fortress Macross: episode 1,2,3,4</i>	1982 - 1983
2 Satoshi Kon	<i>Paprika</i>	2006
3 Mamoru Oshii	<i>Patlabor 2 : The movie</i>	1993
4 Katsuhiro Otomo	<i>Akira</i>	1988
5 Makoto Shinkai	<i>The Place Promised in Our Early Days</i>	
6 Masaaki Yuasa	<i>Mind Game</i>	2004
7 Yoko Kanno	<i>Cowboy Bebop</i>	1998



SOUND BOOTH S=1/50

## EQUIPMENT:

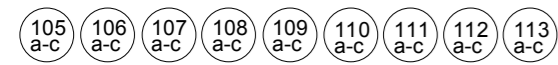
Item	Nos.
Projector Panasonic PT-AX200U	6
JVC LT-40FN97 flatscreen 40"	6
JVC SR-DVM700US dvd player	4
JVC XV-N652S dvd player	8
JVC SR-DVM700US dvd player for Kanno	1
Sound system for Yoko Kanno	1
Speaker	6

## FURNITURE:

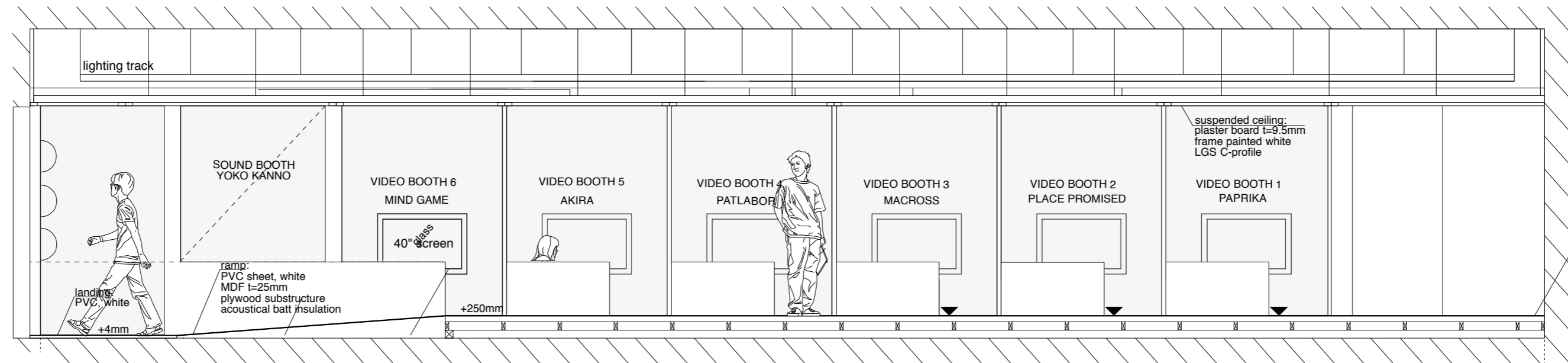
Item	Nos.
Clogs Cushion 'A' LWH 1800x300x109	7
Clogs Cushion 'B' LWH 1150x400x109	6

## ARTWORK:

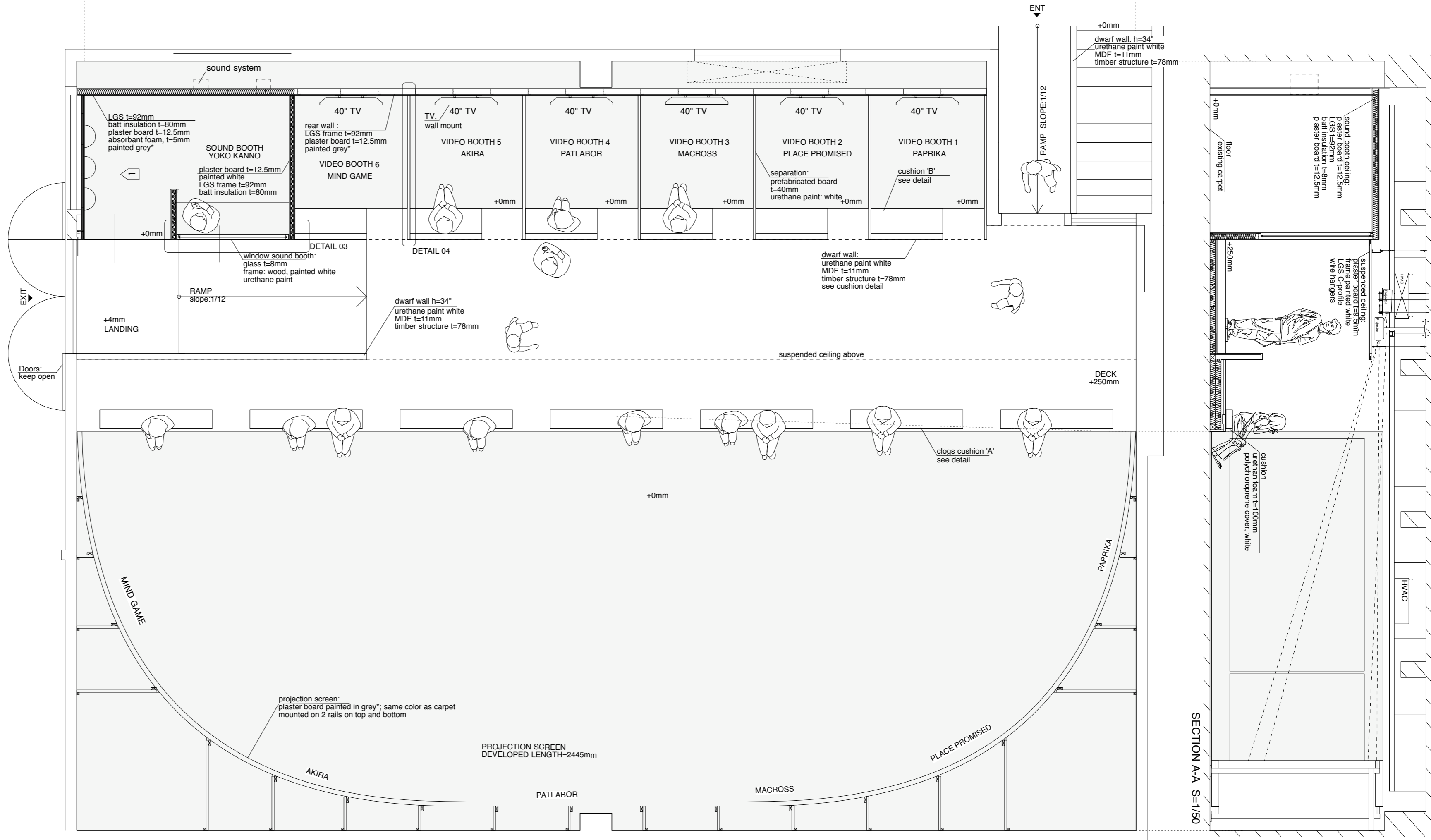
Yoko Kanno  
DOME 14"dx7" h :nos.9



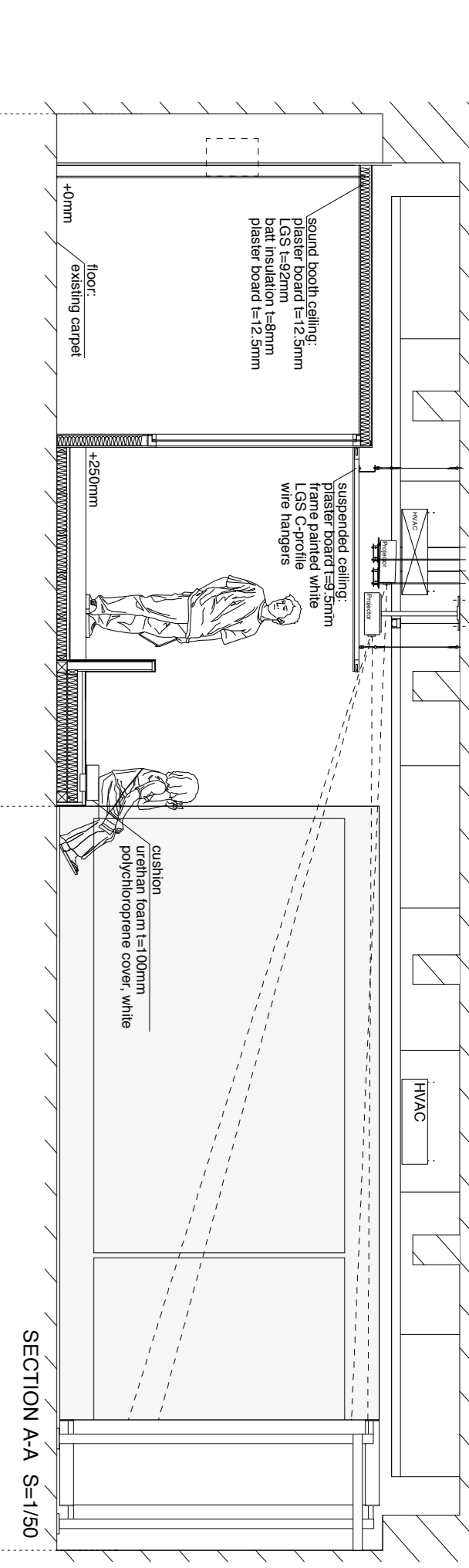
MODEL



SECTION B-B S=1/50

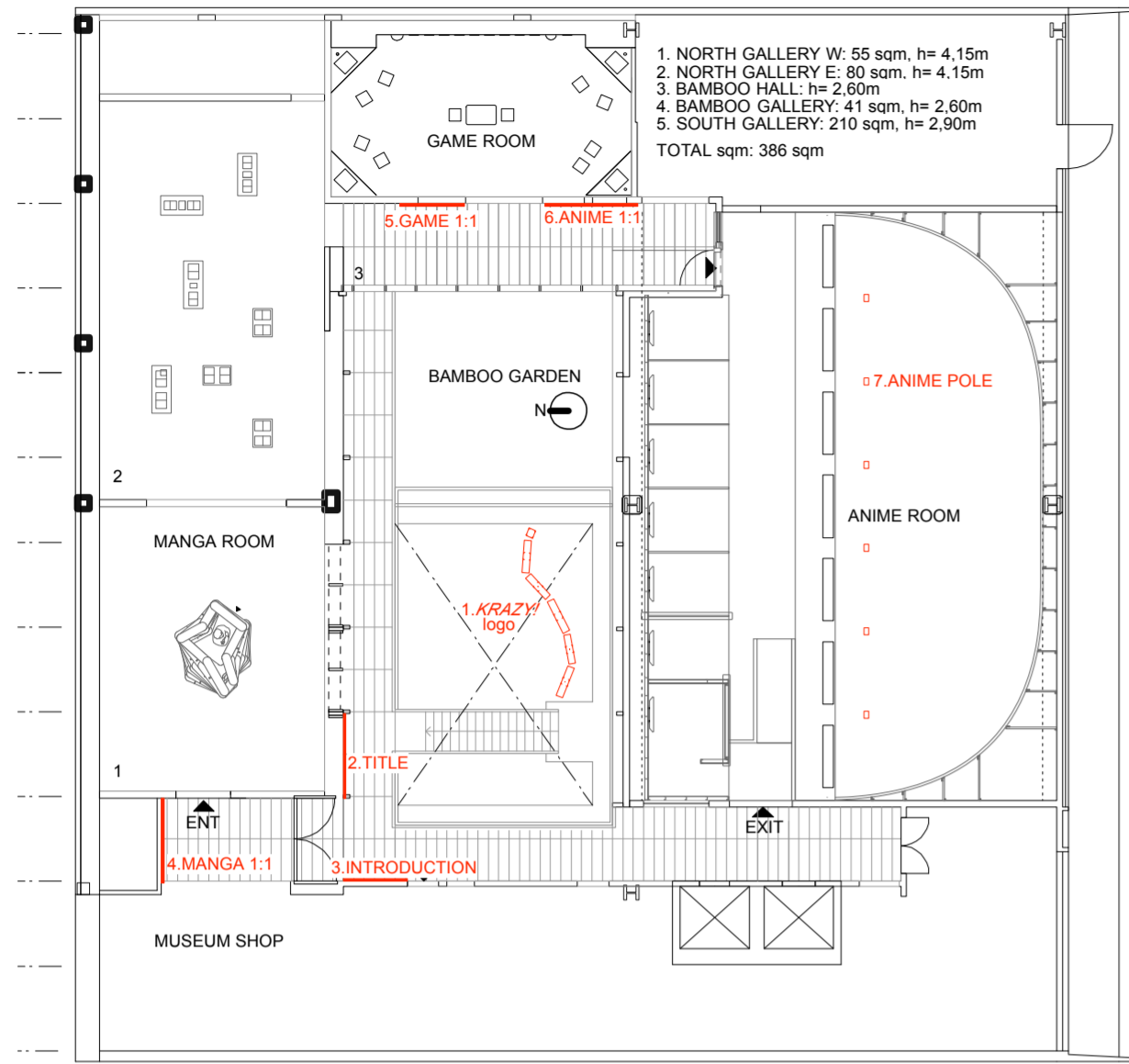


PLAN S=1/50

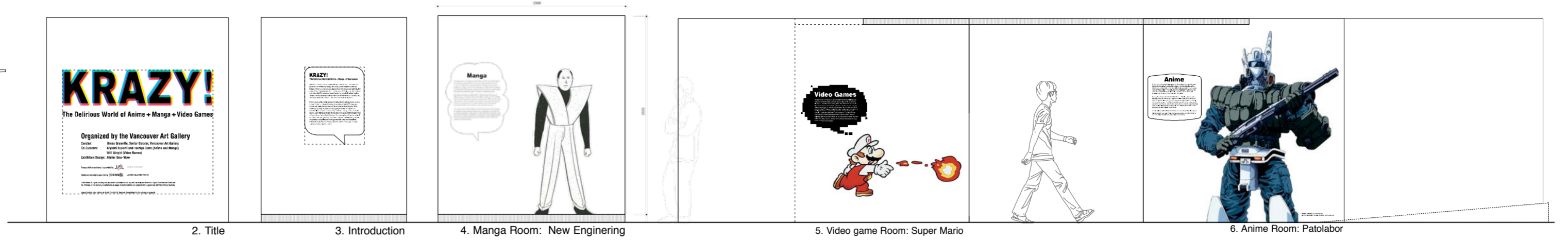


SECTION A-A S=1/50

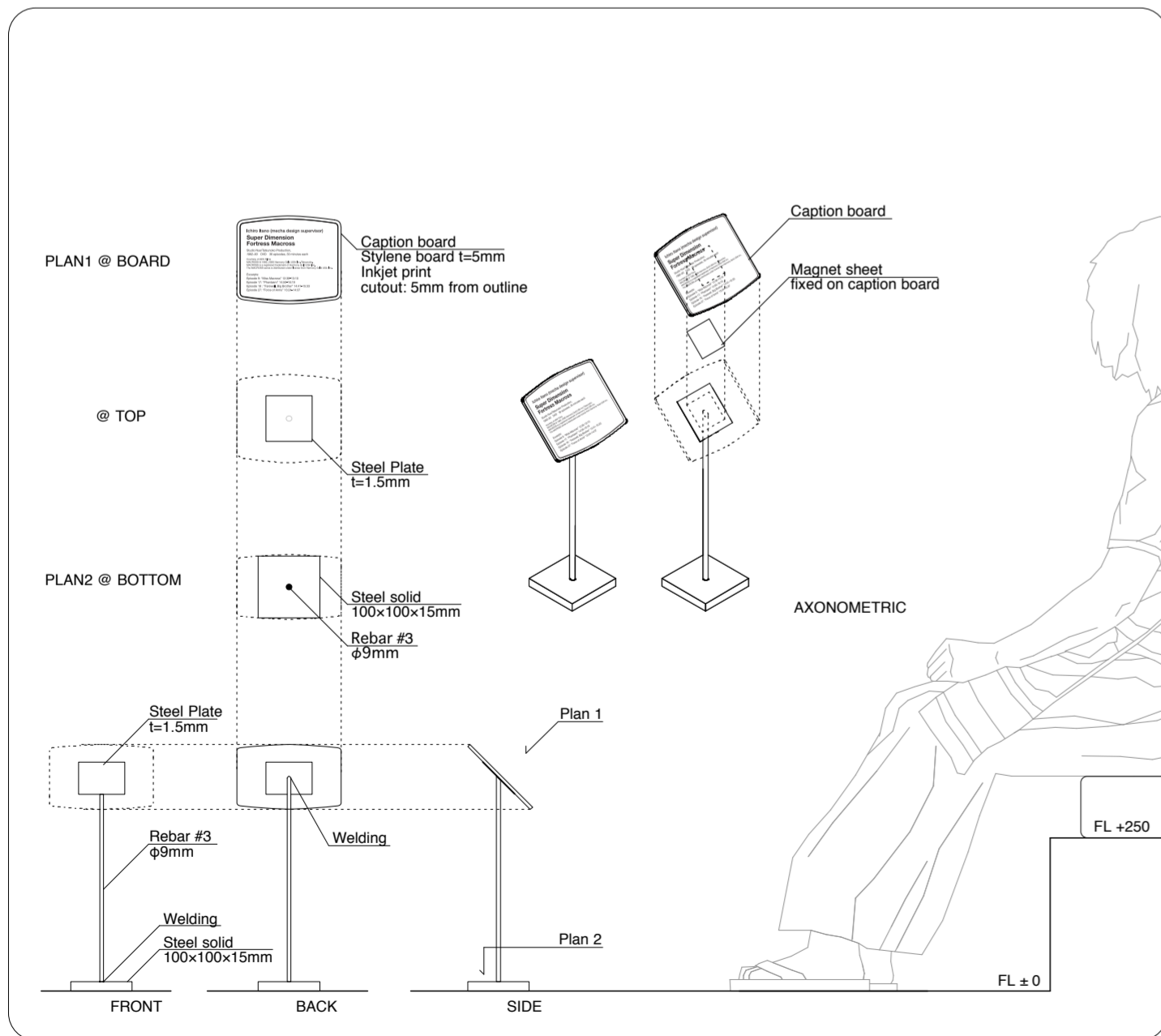
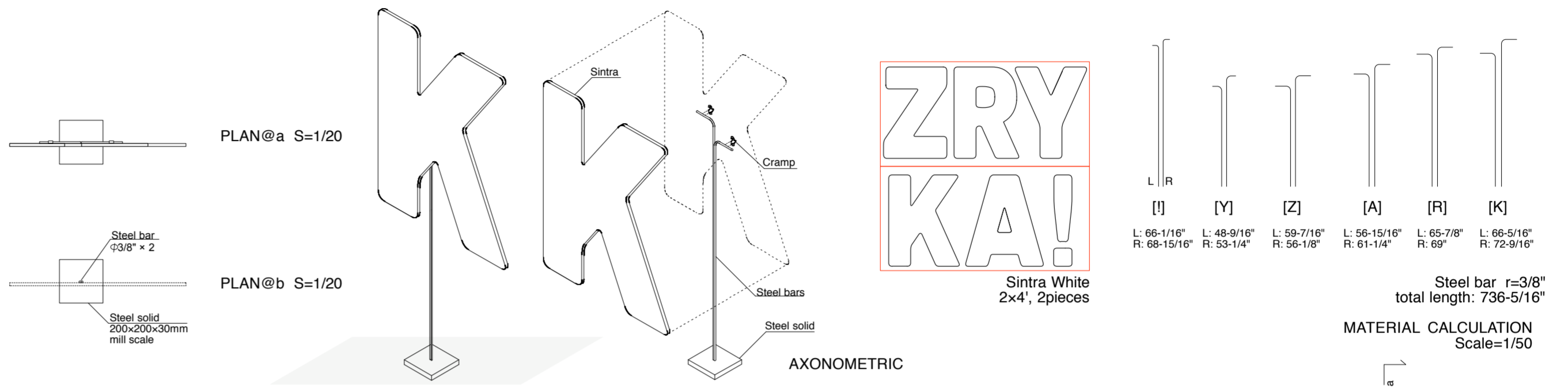
# INTRODUCTIONS



FIRST FLOOR PLAN Scale=1/200



ELEVATION Scale=1/50



7. ANIME GARDEN CAPTION STAND S=1/10

